

The Land of Millwork Products

DOORS The Highest Ratings



Therma-Tru of Maumee, Ohio, offers a Lip-Lite impact-rated glass, which it says has an attractive scrolled frame design made of light-weight aluminum. The frame's width is unobtrusive and features a patent-pending screw channel cover that hides unsightly screws giving the door a cleaner appearance. Homeowners can choose from a wider selection of hardware styles because the frame allows for extra room between the frame and the lockset.

For areas threatened by high-velocity winds, Therma-Tru's Opaque impact-rated fiberglass doors have a high structural rating and a patent pending design that includes a steel plate underneath the skin for added strength and rigidity, according to the company.

✓ www.thermatru.com

You Have the RightConcept

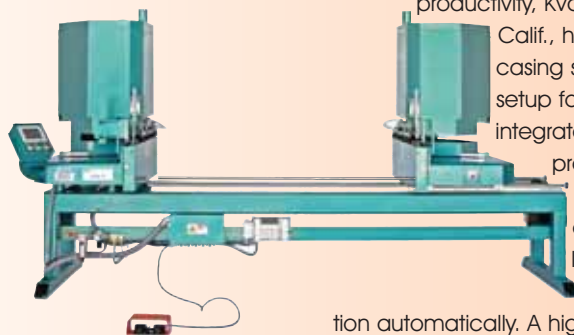
Tacoma, Wash.-based RightConcept Doors introduces its CUMARA Mahogany Door Series.

The company says the doors feature fiberglass skins that are dent-, crack-, split- and rot-resistant, have LVL construction and more. Its CUMARA Cottage Collection features door styles available in one-, two- or four-panel designs, and one- or two-panel planked designs in 6-foot 8-inch and 8-foot heights. The Heritage Collection features door styles with decorative glass options available in center arch, $\frac{3}{4}$ rectangle, and $\frac{3}{4}$ oval designs in 6-foot 8-inch heights.



✓ www.rightconcept.com

MACHINERY Reduce Casing Inventory



To reduce casing inventory and improve productivity, Kval Inc. of Petaluma, Calif., has developed a miter casing saw with push-button setup for length and miter. The integrated touch screen control provides 72 programmable buttons to automatically adjust the saw locations and miter or square sawing orientation automatically.

A highly precise ball screw and servomotor are controlled directly by the computer to adjust the machine to within just a few thousandths of an inch.

All popular casing profiles between 12 and 98 inches can be processed at up to 30 pieces per minute with the standard hopper feed system. Cut quality also is very good with top-down sawing through the material face, just like a finish carpenter's power miter box.

For further information, including a full quotation and DVD demonstration showing the machine in operation, contact Kval. A video also is available for viewing.

✓ www.kvalinc.com

Choose Your Wood Species

Dallas-based Plano Building Products Inc. (PbP) offers doors in multiple species of wood, including mahogany, walnut, oak, alder, fir and pine. A full range of styles is available, including decorative glass doors, raised-panel doors, French doors and wrought iron doors; and are available in a large collection of glass, including clear and textured glass, insulating clear and low-E glass and insulating bevel glass.

✓ www.planobuilding.com

Detail-Oriented

Platte Valley Woodworks of Ft. Collins, Colo., manufactures custom pre-hung doors and architectural millwork. The company has several lines of doors, each built to the same exacting standards with price points to meet most any custom project. From fully arched



entries to detailed interior doors, production capacity is hundreds of doors per week, rather than dozens per month. Lead-times are typically six weeks for doors and five to ten business days for millwork. There are few limitations on the species and grade of wood that can be selected; options such as hand-planing and distressing are available, as is pre-finishing.

✓ www.plattevalleywoodworks.com

Walk the Plank

GlassCraft Door Co. of Houston has introduced a plank door that can be modified to fit most exterior door openings. The company begins with a door blank, which is built simi-



larly to a large engineered door stile. The blanks are available in both mahogany and knotty alder wood options. GlassCraft creates the plank look from these blanks by cutting v-grooves into the door on its CNC

machine. Then it modifies the top rail to fit the opening.

GlassCraft can modify the blanks from a double-round top unit to a single-round top unit. These doors also can be trimmed down to fit a 32- by 80-inch opening. Typical options chosen by customers include clavos, metal or wood straps, speakeasies with wrought iron grilles, pre-finish and pre-hung.

✓ www.gcdoor.com

Buffelen Woodworking

Buffelen Woodworking Co., located in Tacoma, Wash., offers plantation-style louver doors. Currently available in full-louver; louver/lockrail/louver; and louver/lockrail/panel designs, the doors are offered in fir, hemlock or mahogany in thicknesses of 1 3/8-, 1 3/4- or 2 1/4-inch doors.

Matching jamb compo-



DECORATIVE GLASS Check the Catalog

RSL Inc. has a new "2008 Decorative Doorglass Catalog." Customers can choose from more than 250 different designs and sizes in the new catalog. New designs include the Floral, Horizon, Emerald, Dahlia, Victorian, Niagara, Knight and more.

✓ www.rslinc.com



nents and detailed CAD drawings are available as well. Coming soon to this line also will be chevron (vented and non-vented) louver doors.

✓ www.buffelendoor.com

More and More Options

Stallion Doors and Millwork of St. Cloud, Minn., has V-grooved raised or flat panels available with all its wood species and design options. Customers also can customize doors by replacing any wood panel with glass, chalk, marker board or louver. The doors and bi-folds are 1 3/8-inch or 1 3/4-inch thick and available in any width and in any height.

✓ www.stalliondoors.com



IMPORTED PRODUCTS A Taste of Asia

Hong Kong-based Asia Building Materials Ltd., represented by Jerry Huber and Associates in Raleigh, N.C., introduced two new product lines for 2008—its white cellular styrene polymer (CSP) profile mouldings and pattern stock, and its clear Cape Cod gray primed 18-inch R&R Paulownia sidewall shingles.

The CSP currently is available in the WM180 brick mould profile and in tongue-and-groove pattern stock. The company says



The Land of Millwork Products

that CSP products will not rot, are stiff like wood, cut like wood and are much lighter than PVC products.

The shingles are lightweight, rot- and insect-resistant and dimensionally stable, according to a company release, which make Paulownia an excellent choice for sidewall shingles.

✓ www.asiabm.com

STAIRPARTS Color Match Your Handrails

If you're looking for handrails, bending rails and landing treads that correspond to your own specifications, Menuiserox Inc. can help. The Beauceville, Quebec-based manufacturer offers color matching and quality finger joints. White hard maple, red oak, cherry, beech and many more species are available.

The company offers handrails up to 24 feet long.

✓ www.menuiserox.qc.ca

MOULDINGS The Raw Advantage

Yuba River Moulding & Millwork Inc. in Yuba City, Calif., manufactures mouldings in ponderosa, sugar pine and radiata pine.

The company produces solid lineal, solid

CTL, finger-joint and MDF mouldings either raw or primed. Bar-coding application is available for material that must be bar-coded.

✓ www.yrmm.com

In Pristine Condition

Yuba City, Calif.-based Sunset Mouldings' Suntrim™ MDF product line is manufactured from super-refined MDF and is lightweight. Suntrim™ products are produced at both the company's Live Oak, Calif., and Idabel, Okla., locations, and are packaged specially so they arrive to customers in pristine condition.

The company says Suntrim™ offers: superior quality; outstanding finish; short lead times; and a variety of architectural profiles. The products are available in lightweight or medium-weight board and primed or raw. The products include mitering, shrink-wrapping of prepackaged sets; custom labeling; bar coding; specified length; plinths and rosettes.

✓ www.sunsetmouldings.com



Customize Your Stair Parts

North Wilkesboro, N.C.-based Crown Heritage stair parts offers distributors and dealers the ability to custom-order stair parts in 12 wood species.

Your architect customers can specify Crown Heritage stair parts easily and quickly through the custom order program. The 12 species available will complement any style of a home plan. Your builder customers are able to get any of the 12 species on a short lead-time to ensure efficiency and convenience in the homebuilding process.

The 12 species available are: American cherry, Brazilian cherry, maple, poplar, mahogany, beech, hemlock, red oak, white oak, black walnut, alder and hickory.

✓ www.crownheritage.com



Trim Up with AZEK

Scranton, Pa.-based AZEK Building Products Inc.'s AZEK® Trim features AZEK Mouldings with 15 profiles

replicating traditional moulding standards. AZEK Mouldings have the same look and feel as AZEK Trim products in a white matte finish.

AZEK Mouldings are available in crown, casing, cove, drip cap, shingle band and sill profiles in a variety of sizes and styles. In addition to AZEK Trim and Mouldings, the company recently introduced AZEK® Deck with Procell™ technology, a cellular PVC decking, which the company says resists stains, mold/mildew, scratching and fading.

✓ www.azek.com



Time-Tested Products

For the past 114 years, Menzner Hardwoods has been working with distribu-



tors and dealers. The company offers a number of moulding products, including a wide variety of wood species that are complemented with a diversified list of product profiles.

✓ www.MenznerHardwoods.com

A Clear Choice

Fletcher Wood Solutions is a part of the Tenon Limited group of companies, which operates pine-manufacturing facilities in Taupo, New Zealand. With U.S. headquarters in Annapolis, Md., Fletcher Wood Solutions distributes its clear boards, mouldings, LIFESPAN™ treated wood and lumber to the North American market.



The company's procurement activities enable the end-user to access a variety of complimentary products. In addition, Fletcher Wood Solutions maintains direct access to one of the largest Forest Stewardship Council-certified pine plantation forests in the world, and its manufacturing plants have been certified by the FSC (FSC SCS-COC-00198).

✓ www.LIFESPANOutdoor.com

Environmentally-Friendly Mouldings

Finsa offers a range of mouldings that can be finished according to customer needs. Finsa says its products cause no harm to the environment.

From the point of extraction/replanting to the point of sale/recycling, the company maintains the guarantee of sustainability.

✓ www.finsa.es



EXTERIOR PRODUCTS Installer-Minded Railing

Titan Pro Rail is an ADA-compliant metal system clad in vinyl, created with the railing installer in mind. With Titan's heavy-duty cast aluminum posts pre-attached to the steel posts, a Titan railing section assembles in minutes and is a good fit for both commercial and residential applications.

The design of the top rail profile meets the International Residential Code for stair handrailing, eliminating the need for a secondary handrail, and the vinyl exterior and aluminum rail stiffeners can be cut onsite easily, unlike systems with steel inserts.

✓ www.rdirail.com



A Broad Selection

Column Crafters is a full-line manufacturer of vinyl square and tapered columns with a broad selection of stock items. All Column Crafters' products are manufactured in the United States, and its columns do not require painting for protection, yet accept acrylic latex paints easily.

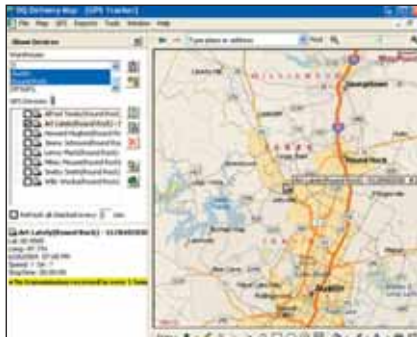
The company offers a low-maintenance wood alternative with long-term durability that will not rot, cup, split, twist or warp. In addition, the products are weather-, moisture- and insect-resistant.

✓ www.columncrafters.com

The Land of Millwork Products

SOFTWARE

Know Where Your Trucks Are?



Cedar Park, Texas-based DQ Technologies' Order Delivery Tracking (ODT) helps businesses achieve an increase in the efficiency of current delivery resources and staff by providing your dispatcher, sales team and management with an overall picture of delivery status. The ODT also reduces the costs associated with delivery by eliminating mileage and time wasted while being lost, reducing fuel usage by using the optimal route and by reducing excessive breaks and unauthorized stops by using GPS devices to track vehicles.

✓ www.dqtech.com

Driving Improvements

Majure Data of Alpharetta, Ga., says it is driving improvements in the building products industry through its RF Navigator Warehouse Management System, Dashboard, Labor Management System and Event Management System. Benefits of implementing Majure Data's systems are: a 20- to 30-percent increase in warehouse productivity; more effective management control; and improved responsiveness to customer demands.



The WMS utilizes bar-coding and wireless terminals to track every movement of material throughout your facility, and the RF Navigator Dashboard provides management the ability to monitor key performance indicators in real-time to improve the operation of the warehouse.

The Labor Management System monitors and evaluates operator productivity, and the Event Management System sends e-mail alerts based on your key performance indicators and predetermined thresholds.

✓ www.majure.com

SCREEN DOORS

The Deluxe Door

The GranDeur by RiteScreen in Elizabethville, Pa., is a deluxe out-swing screen door, which features an ultra heavy-duty 4-inch wide by 1 1/4-inch thick extruded aluminum frame. Single or double French door units are available.



Stylish mortise handle options include five finishes: black, white, brass, satin nickel or oil-rubbed bronze with a deadbolt lock. The product can be upgraded by selecting the full-view tempered glass panel option.

✓ www.ritescreen.com

REPLACEMENT PRODUCTS

Door Replacement: Fast and Easy

HighMark Digital of Mountain View, Calif., has released its new One-Cut service. One-Cut provides a simplified three-step door fit system within existing jambs. With One-Cut, interior and exterior doors are measured precisely, cut and fit within minutes



and can be used and installed by sales companies, retailers of all sizes and milling centers servicing residential and commercial customers.

One-Cut uses proprietary tools and software that deliver precision measuring, cutting and fitting of doors, accounting for any variances in the door jamb, hinges and hardware by capturing the structural components of the existing frame digitally. The patented One-Cut system includes a door imaging system, custom door machining center and software that ensures the final fit is accurate within 1/64 of an inch.

✓ www.highmarkdigital.com

DOOR COMPONENTS

Move to the Front of the Line

FrontLine Building Products of Green Bay, Wis., manufactures aluminum cladding for entry door frames and aluminum garage door frames. The company says its extruded shapes allow its customers



to clad virtually any pre-hung door in the industry without any modifications regardless of the size or manufacturer of the door.

FrontLine Building Products also manufactures an all-aluminum garage door frame. The garage door frame is supplied pre-cut to size and ready for installation on the jobsite. The all-aluminum frame is rot-, decay- and moisture-resistant.

✓ www.frontlinebldg.com

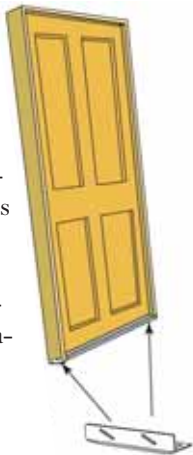
A Value-Added Door Sill Pan

Made of heavy-duty molded polypropylene, Door Sill Pans from Rock Falls, Ill.-based Generation 4 Sales help maintain an efficient and repair-free door entrance. These door sills provide a number of value added features, including: a reduction in the risk of water damage to interior carpets and hardwood floors; reduction in time required to install door; increased performance of the sill; and more.

✓ www.generation4sales.com

A Packaging Essential

The bottom skid by Doorframer Inc. of Lincoln, Calif., is designed to protect the jamb from chipping and to make the door easier to slide, according to company officials. It's intended for use with both interior and exterior doors from the point of manufacture to the point of installation. The bottom skid is secured by stapling to the jamb.



According to a company release, it easy to install and its design reduces the chance of a part being dislodged by rough floors or wire racks. In addition, the bottom skid can be installed on the head jamb for easy movement when door is inverted.

✓ www.doorframer.com

New Glass Designs

Western Reflections of Gallatin, Tenn., recently introduced new glass designs for 2008.

New simulated divided lite (SDL) doorlites provide the look of true divided lites (TDL), but they are designed for use in fiberglass and steel doors. The SDLs feature mill-finish internal spacers, black backer strips and wide 1-1/8-inch muntin bars. The glass designs are available in 48-inch, 6-lite and 64-inch, 8-lite with coordinating sidelites, in low-E or clear glass.

The company's Stratford decorative glass has the warm luster of hand-rubbed antique brass coming and is available in platinum coming in 3/4-lite, 64-inch and 80-inch full lites, sidelites, and transoms.

Lancer

Lancer Clad Door Frames are an entire system of production-ready, clad sub-assembly jambs. The Waterloo, Iowa-based manufacturer says to make the frames, the wood and metal are joined in a unique process. Aluminum roll form is glued to the finger-jointed wood substrate and an aluminum extrusion is applied over and secured to the wood member for a slim line fit. Parts are pre-fit to product specifications with the head and sill dadoed; hinge and strike preps also are available.



In addition, the company's clad product is available as inswing, outswing, continuous sill/head mull post, radius door units, transom units, garage door frames and radius garage door frames.

✓ www.windorinc.com

The Land of Millwork Products

An Expanded Component Product Line



Woodgrain Millwork's exterior frames division has introduced several new species to its exterior frame and component manufacturing product line. The Fruitland, Idaho-based company says its expanded product offering includes mahogany, oak, cherry and maple

species for a variety of applications, including exterior frames, brickmoulds, mull posts, exterior components, stops and double rabbet jambs.

Mull posts in a variety of sizes, brick mould, mull casing and transom sills are just a few of the profiles that can be produced with all species. To complete the package for customers, Woodgrain Millwork offers extruded cellular PVC. The new hardwood species also can be mixed with standard primed and solid pine components at less than unit quantities for better inventory turns.

✓ www.woodgrain.com

DOOR AND WINDOW COMPONENTS

Door Frames and More

Fargo, N.D.-based Tecton Products LLC is continuing to offer new and innovative products to the market. These products include door and window frames for Marvin's Integrity® and Infinity® windows and patio doors and the Tecton® door frame.

Tecton manufactures and has now licensed Pultrim®, a Pulte Homes exterior trim system. This complete system will be marketed and sold outside of Pulte as Tecton® architectural trim. In addition, Tecton also has unveiled a new fiberglass siding system called Tecton® structural siding. This siding is designed to offer fast installation, excellent water management and long-term performance advantages over existing siding systems.

✓ www.tectonproducts.com

Custom Entry Door Transoms

Transoms from Parrett Manufacturing of Dorchester, Wis., are offered in custom made-to-the-size and shape that you desire. Parrett offers numerous glass options including decorative glass patterns that are compatible with most door entry systems. Aluminum-clad and jamb options are available to match with most aluminum-clad door jamb systems. In addition, numerous options exist for aluminum brickmould and casings.

✓ www.parrettwindows.com

Attain a Firm Corner Joint

Merrill Millwork Inc. of Merrill, Wis., has a heavy-duty low-profile sill that meets the ADA requirement of ½-inch height. The thermally-broken bronze anodized sill features a wall thickness of .80 of an inch.

The company says because of a unique end-plug system and mull adapter there is no need for special jambs, and mull posts and are available in 4 9/16-inch and 6 9/16-inch. The company says the end plugs create a firm corner joint in both directions.

✓ www.park-vue.com

TRANSPORTATION SOLUTIONS Innovative Products for Transport

Door and window transportation products are LCS Precision Molding's newest innovations. The Waterville, Minn.-based manufacturer offers 15 product choices either to maintain alignment or secure door and window units during transportation. These new product lines include door clips, door plugs, hinge shims, skids and lift handles—each with a different application focus.

The company says the diversity of these parts permits a variety of choices and solutions for manufacturers, distributors and product handlers in the fenestration market.

✓ www.lcsplastics.com

LITERATURE Easy-to-Use Format

Simpson Door Co. of McCleary, Wash., has released a new catalog, based on the theme "Life Goes Through It."





The new catalog is divided into sections that feature Simpson's variety of styles for exterior and interior doors, and an easy-to-follow key is included for available options, incorporating details such as wood species, size, glass and coming options, performance-enhancement options and glass privacy ratings. Special foldout sections also feature the individual stories behind homeowners' custom door choices, including the door designs that served as their original inspirations.

✓ simpsondoor.com

BENDING SERVICES A Thermoforming Oven

Looking for a way to bend solid surface material, PVC or vinyl? Thermoforming, the process of heating and bending, could be the answer. With Pinske Edge Thermoforming Ovens, a flat surface can become a radius or any shape imaginable, according to the Plato, Minn.-based company.

✓ www.pinske-edge.com

New Decorative Window Line

Shelter Products LLC of Stamford, Conn., has launched a new decorative window line, called the Artisan Series.

This new window line features oval-, round- and arched-style windows glazed with a special acrylic and polyester blend that allows them to reproduce in detail any glass pattern design. The initial offering will be nine patterned styles in a leaded coming and a wrought iron look. They also will offer a standard insulating glass as well as tempered insulating glass with removable grills.

The frames are made of polyurethane and have a closed-cell structure, which provides protection from moisture and therefore are rot-resistant. In addition, the closed-cell structure prevents paint from peeling from the surface. The frames can be painted or stained on either side. Interior colonial casing is provided for interior finishing, and standard jamb accommodates a 4 9/16-inch wall with an optional extension jamb to accommodate walls up to 6 9/16 inches.

✓ www.shelterproducts.net



Three in One

The Cascade Family of Companies includes Cascade Wood Products, Western Valley Cutstock and Turncraft. Cascade Wood Products manufactures a line of wood sash, window frames, door frames and trim, including Frame Defense products. Extras include certified treating and priming along with hinge, strike and weatherstrip installation.

Western Valley Cutstock has just unveiled a Knotty Alder line of door frames, casings and many other trim patterns in grades ranging from superior to premium and even custom finger-jointed products. In addition, Turncraft, a manufacturer of columns, posts and railings, is renowned for its comprehensive selection of precision built products. Turncraft has also added a Poly-Classic poly porch post made from seamless window-grade vinyl.

✓ www.cascadewood.com



Want to be Part of the AMD Products Section Next Year?

Please send your release and photo to Samantha Carpenter, editor, at scarpenter@sheltermagazine.com. Get your product introduced to more than 30,000 industry professionals.